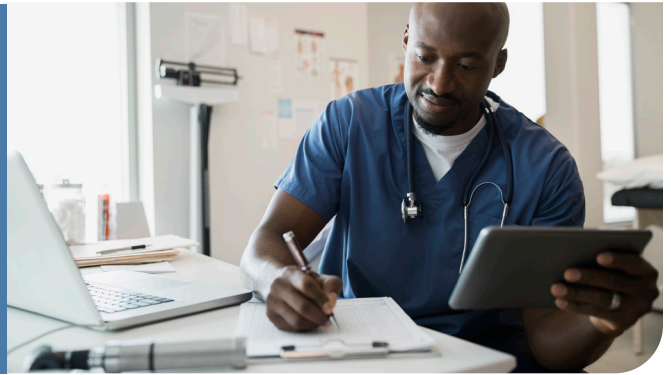




Bringing convenience, compassion and real clinical care to get injured employees back-to-work more quickly



Berkley Southeast Insurance Group and Tele-Emergent Care

We understand the importance of responding quickly when an employee is injured on the job, whether the event requires emergency or non-emergency treatment.

Our voluntary Tele-Emergent medicine care program for existing and new Workers' Compensation policyholders, provides injured employees immediate access to an emergency trained Physician in less than 5 minutes, without having to leave the work place. Every workers' compensation event is triaged by a highly trained physician Board Certified in Emergency Medicine, who can advise, prescribe and refer, and is available 24/7/365 through our partnership with MedCall Healthcare Advisors, LLC.

Benefits of our Tele-Emergent Care Program

"Call a Doctor First"

- Med-Call Advisors maintains the nation's largest Emergency Medical Practice
- Global 24/7/365 access via smart phone
- Real clinical care provided by Board Certified ER Physicians who make medical decisions that are in the best interest of the injured worker - potentially providing better outcomes
- Call Center staffed by medical professionals who document the event in real time
- Events accurately memorialized removing the burden of employers to recreate events
- Eliminates avoidable ER and Urgent Care visits
- Free Physician follow up for injured employee for up to 7 days
- Controls your medical costs potentially improving your E-mod
- Professional Registered Nurses follow up with employer and employee to assess future needs
- Assistance in early return to work when available, helps to improve overall workplace morale
- Bi-lingual Services available

.....
*Of 6.5 million ER visits,
66%
were classified
as avoidable!*

*According to a Truven study. Source: United Healthcare Opinion Research
.....

Want to Know More?

Contact your Territory Manager or...

John Morales | Vice President Claims
jmorales@berkleysig.com

Tracei Jackson | WC Claims Director
trjackson@berkleysig.com



| a Berkley Company

Your Back-in-Business Insurance GroupSM
berkleysig.com



Acadia Insurance Company • Continental Western Insurance Company • Firemen's Insurance Company of Washington, D.C.
Tri-State Company of Minnesota • Union Insurance Company

Notice: For convenience, Berkley Southeast Insurance Group is providing to its policyholders access to MedCall for medical assistance/information, but Berkley Southeast Insurance Group does not endorse the use of MedCall or the information, products, or services (including, but not limited to, the appropriateness or suitability of any diagnosis, course of treatment or medical advice) provided by or accessible through MedCall. Access and use of MedCall, including the information, products, and services on or available through MedCall, is solely at your own risk, and Berkley Southeast Insurance Group makes no representations or warranties, express, statutory, or implied, with respect thereto. Berkley Southeast Insurance Group is not responsible or liable for any damage or loss caused, or alleged to be caused, directly or indirectly, under any theory of law, by or as a result of the use of or reliance on any information, products or services accessible from MedCall. BERKLEY SOUTHEAST INSURANCE GROUP IS NOT RESPONSIBLE NOR LIABLE FOR ANY ADVICE, COURSE OF TREATMENT, DIAGNOSIS OR ANY OTHER INFORMATION, PRODUCTS OR SERVICES THAT YOU OBTAIN FROM MEDCALL.

Berkley Southeast Insurance Group is a member company of W. R. Berkley Corporation, a Fortune 500 Company, whose insurance company subsidiaries are rated A+ (Superior) by A.M. Best. Products and services are provided by one or more insurance company subsidiaries of W. R. Berkley Corporation. Not all products and services are available in every jurisdiction, and the precise coverage afforded by any insurer is subject to the actual terms and conditions of the policies as issued.

© 2024 Berkley Southeast Insurance Group. All rights reserved.



07-2429